



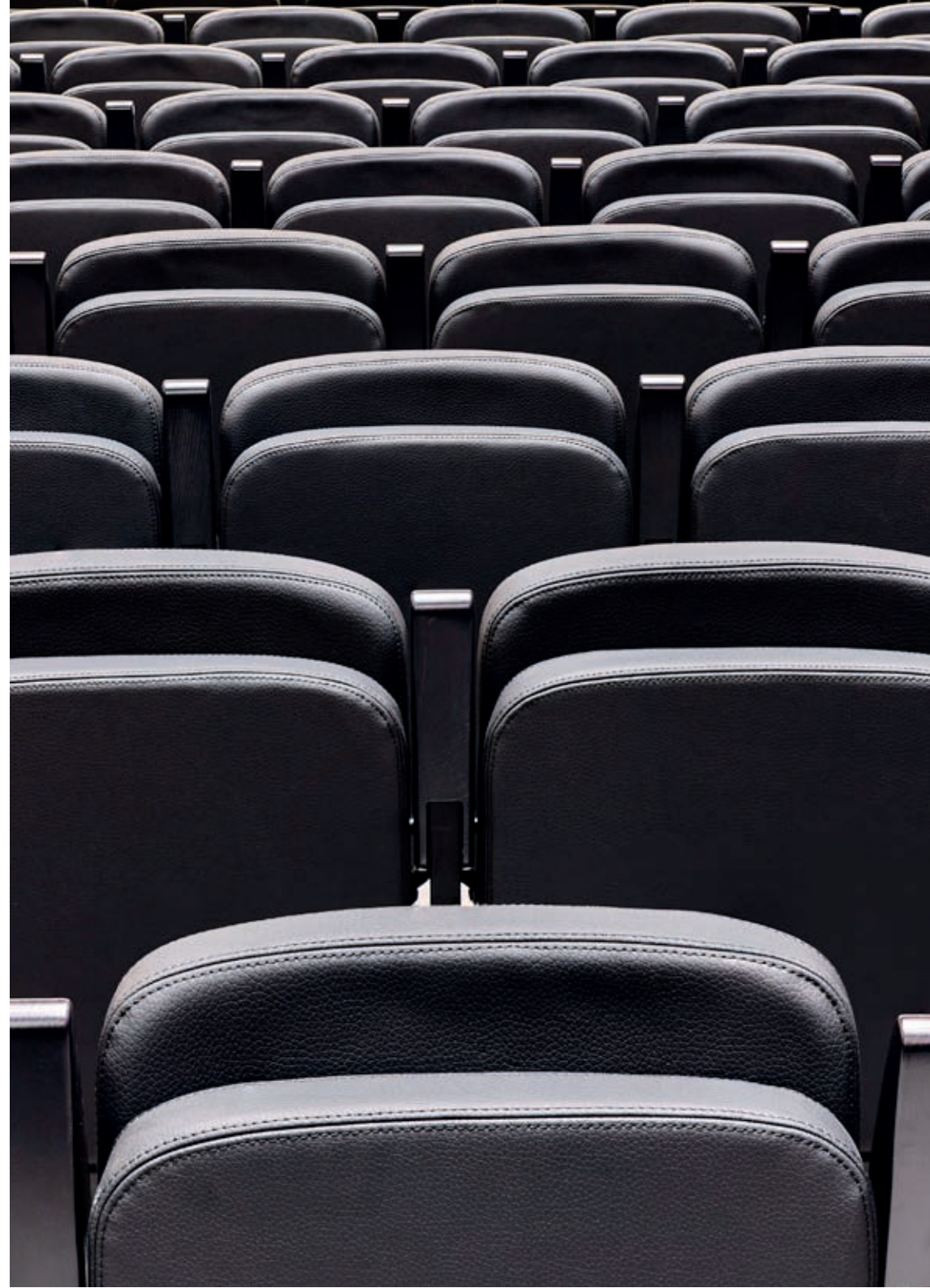
# MEETING PLACE

ORENSE 34



## INDEX

1. MEETING PLACE - ORENSE 34	3
2. SUSTAINABILITY	4
3. TRANSPORT	5
4. CAR PARK	6
5. ACCESSIBILITY	7
6. LOADING AND UNLOADING AREA	8
7. LOBBY AND ACCESS	9
8. GENERAL FLOOR PLAN MEETING PLACE	10
8.1. CLOAKROOM (TABLE)	12
9. AUDITORIUM	13
9.1. AUDITORIUM RECEPTION AREA	18
9.2. STAGE	21
9.3. LED DISPLAY: SPECIFICATIONS FOR PRESENTATIONS	22
9.4. THE LECTURN	23
9.5. AUDIO	24
9.6. SOUND	24
9.7. INTERACTION: CROWD MICS SYSTEM	25
9.8. LIGHTING	25
9.9. VIDEO / VIDEOCONFERENCING	26
9.10. OTHER AUDIOVISUAL MEDIA	27
9.11. WIFI / NETWORK CONNECTION	27
10. GENERAL CONDITIONS	28
11. ROOMS	29
- ROOM 1	30
- ROOM 2	31
- ROOM 3	32
- ROOMS 1+2+3	33
- ROOM 4	37
- ROOM 5	38
- ROOMS 4+5	39
- ROOM 6	41
- ROOM 7	42
- ROOMS 6+7	43
12. FURNITURE	45



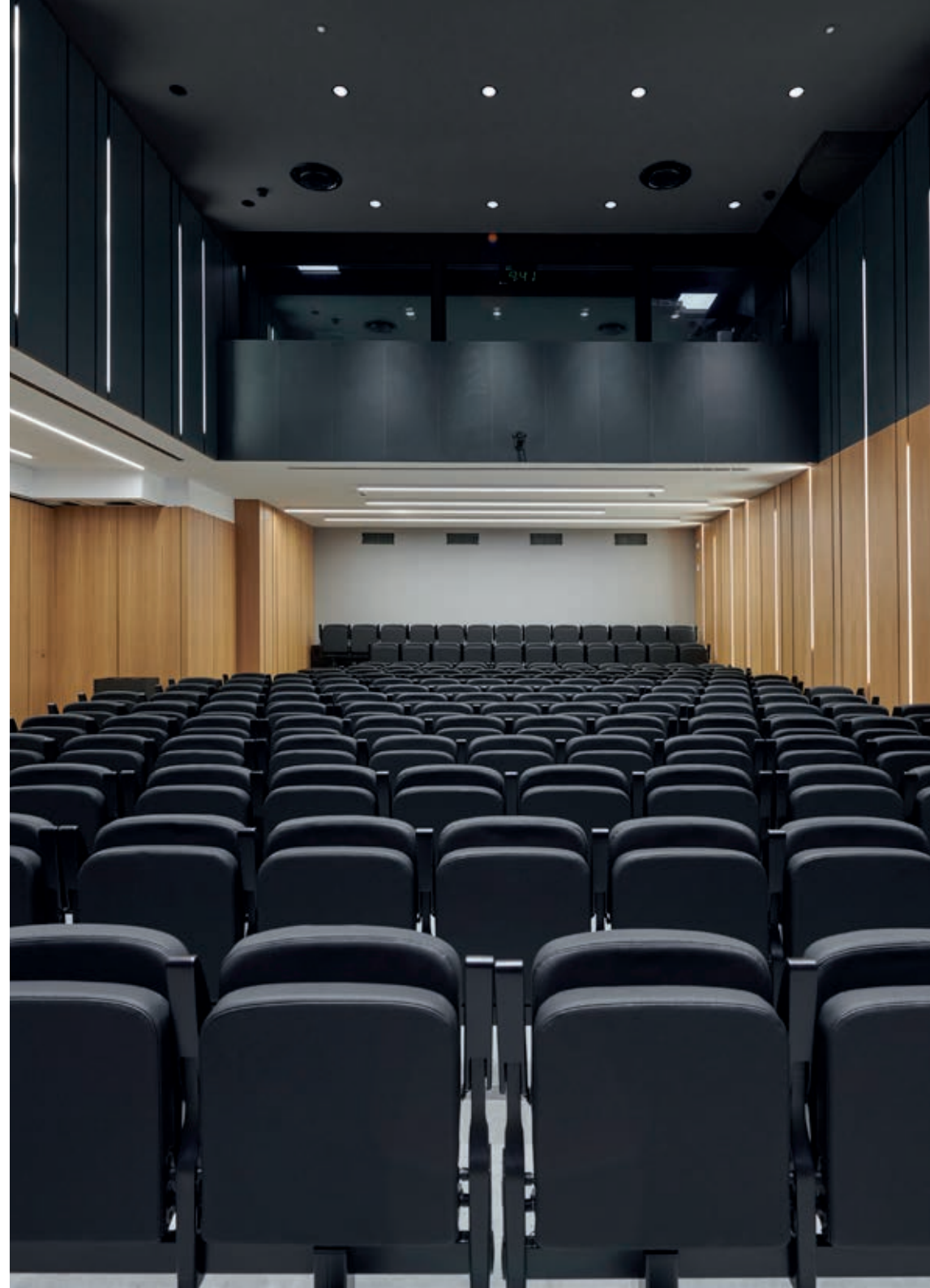
# 1. MEETING PLACE - ORENSE 34

The MEETING PLACE is located in the Orense 34 building, in the heart of Madrid's business district, served by excellent communications and connections to the public transport network.

The MEETING PLACE is a unique space to host corporate events, consisting of a magnificent auditorium with capacity for 183 people and fully folding seats, plus a reception and cocktail area.

These facilities are complemented by seven fully equipped modular meeting rooms with different capacities depending on the type of set up.

The MEETING PLACE at Orense 34 stands out for its multipurpose design and state-of-the-art technological equipment. It's an avant-garde space with carefully selected materials, functional furniture, perfect acoustics, air conditioning and lighting that guarantee users' comfort.



## 2. SUSTAINABILITY

As a sustainable space that delivers high levels of comfort for its occupants, the MEETING PLACE at Orense 34, is aware of its responsibility to protect the environment and ensure the sustainable use of natural resources.

Mindful of this commitment, it promotes improvement actions aimed at minimising the environmental impact of its activity and improving the health and well-being of the people who occupy its spaces:

- > Use of LED displays as a corporate image support at events, reducing the use of traditional signage, thus contributing to saving on paper and other materials.
- > Reduction of energy and water consumption.
- > Contribution to a more sustainable mobility, thanks to its excellent public transport connections.
- > Active recycling policy.
- > Reduction of noise and light pollution.
- > 0 plastic policy.
  - Mineral water in FSC carton packaging.
  - Eco-friendly paper pens and promotion of the responsible use of materials.
  - Flip-chart markers made from 90% recycled plastic.
  - Collaboration with catering companies aligned with the 0 plastic initiative.

Orense 34 holds LEED Gold sustainable certification in the Existing Building category.

In addition, it has obtained the WELL Health-Safety Rating certification from the International WELL Building Institute (IWBI).



WELL Health-Safety Rating Certification



LEED Gold Certification

# 3. TRANSPORT

## CONNECTIONS AND TIMES IN DETAIL



### RENFE

Renfe Cercanías:

Nuevos Ministerios Station at 800 m:  
C1, C2, C3, C4, C10

Times from Nuevos Ministerios Station:

Atocha	8 min.
Chamartín-Clara Campoamor	4 min.
Airport T4	15 min.
Alcobendas-ss de los reyes	23 min.
Las Rozas	31 min.
Majadahonda	35 min.
Pozuelo	29 min.
Tres Cantos	23 min.
Príncipe Pío	20 min.



### AVE (HIGH SPEED TRAIN)

Times from Nuevos Ministerios station:

- > Puerta de Atocha 8 min.
- > Chamartín- Clara Campoamor 8 min.



### TAXI

Av. General Perón stop  
Lima Square



### METRO

Cuzco L10 Hospital Infanta Sofía- Puerta del Sur  
Santiago Bernabéu L10 Hospital Infanta Sofía-Puerta del Sur  
Nuevos Ministerios Station:

- > L6 Circular
- > L8 Nuevos Ministerios-Airport T4
- > L10 Hospital Infanta Sofía-Puerta del Sur



### BUS

LINES: 3, 5, 14, 27, 40, 43, 126, 147, 149, 150



### CAR

Immediate accesses to the following highways: A-1, A-2, A-6, M-11 and M-30.

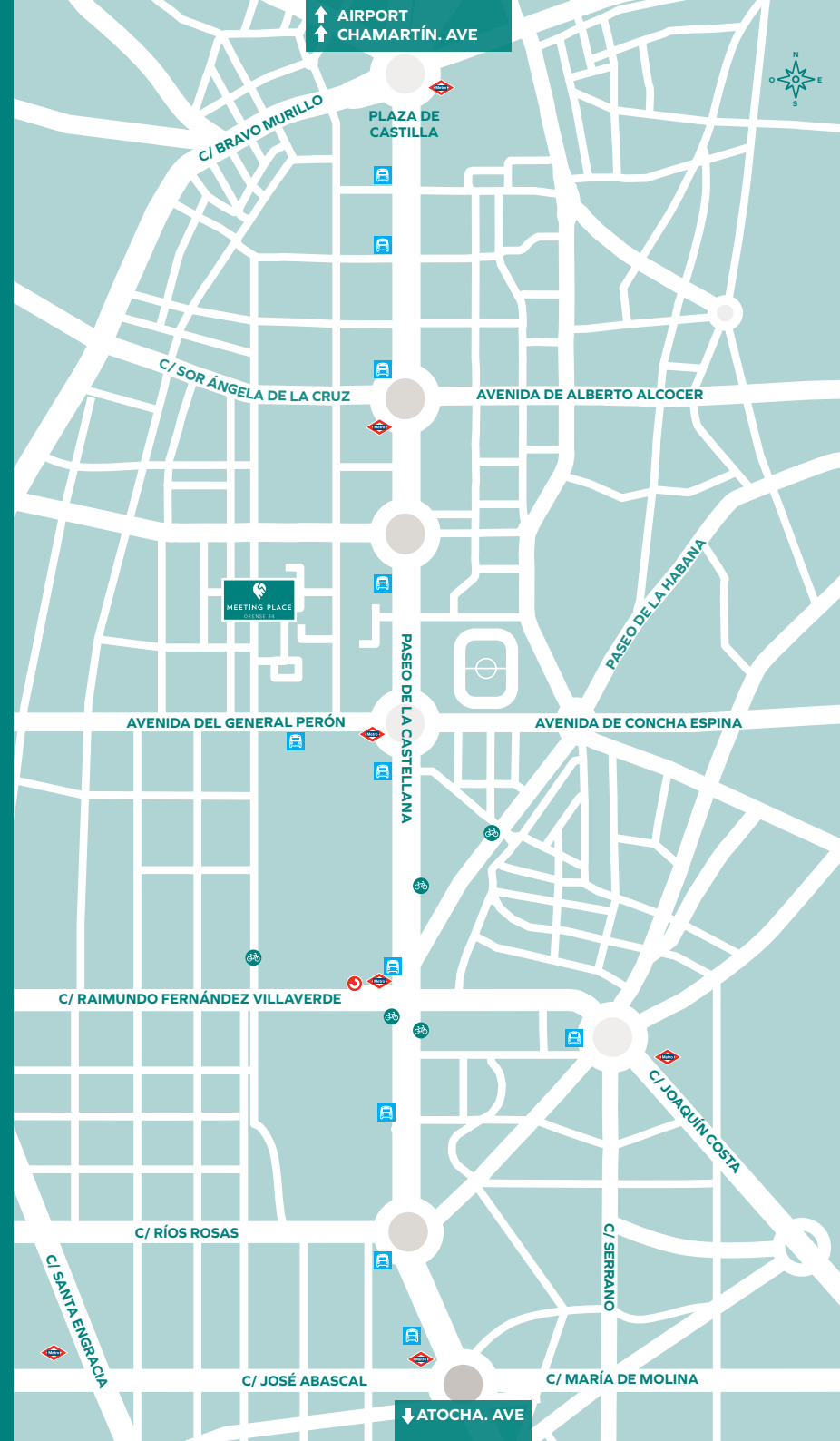
### GPS coordinates:

Latitude: 40.454502 (40° 27' 16.21" N)  
Longitude: -3.694461 (3° 41' 40.06" W)



### BiciMAD

Orense 36 station: C/ Orense 36  
San Germán station: C/ San Germán N° 5  
General Perón station / Capitán Haya: 36 General Perón Ave.  
General Perón station 1: Av. Del General Perón 1-4



## 4. CAR PARK

The MEETING PLACE has a public car park, open from Monday to Sunday, 24 hours a day.

Distributed over 3 floors below ground level (headroom 2 m.), it has a maximum capacity for 469 vehicles and has spaces reserved for electric vehicles, bicycles and electric scooters.

As an additional service, parking spaces can be hired for those attending the events that take place at the MEETING PLACE.



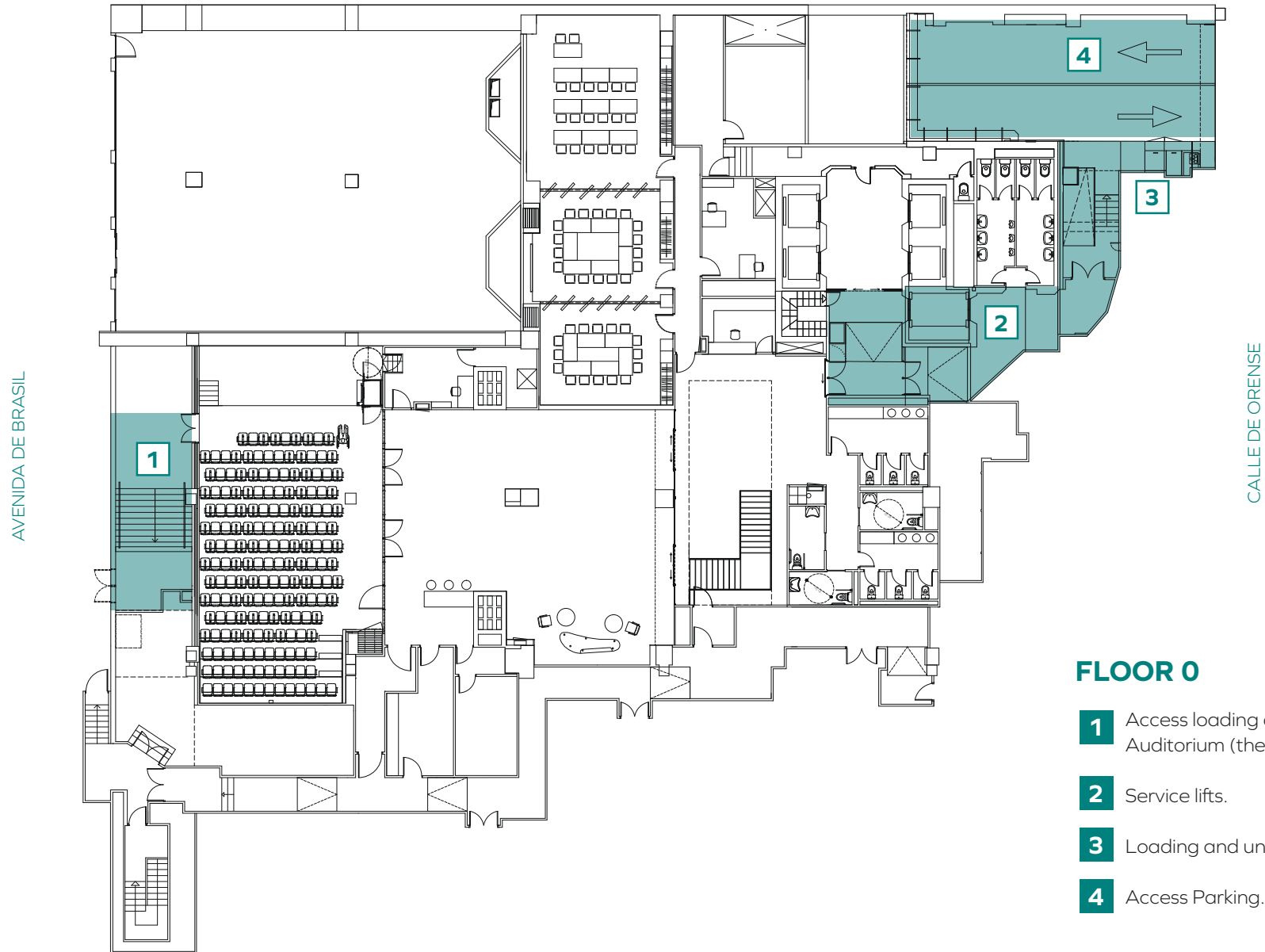
## 5. ACCESSIBILITY

The MEETING PLACE Orense 34, has strict standards of quality, safety and accessibility:

- > Accessible parking spaces.
- > Reserved areas in the Auditorium for wheelchair users.
- > Access to the stage by means of a lift system.
- > Accessible door width.
- > Hearing loop system.



## 6. LOADING AND UNLOADING AREA

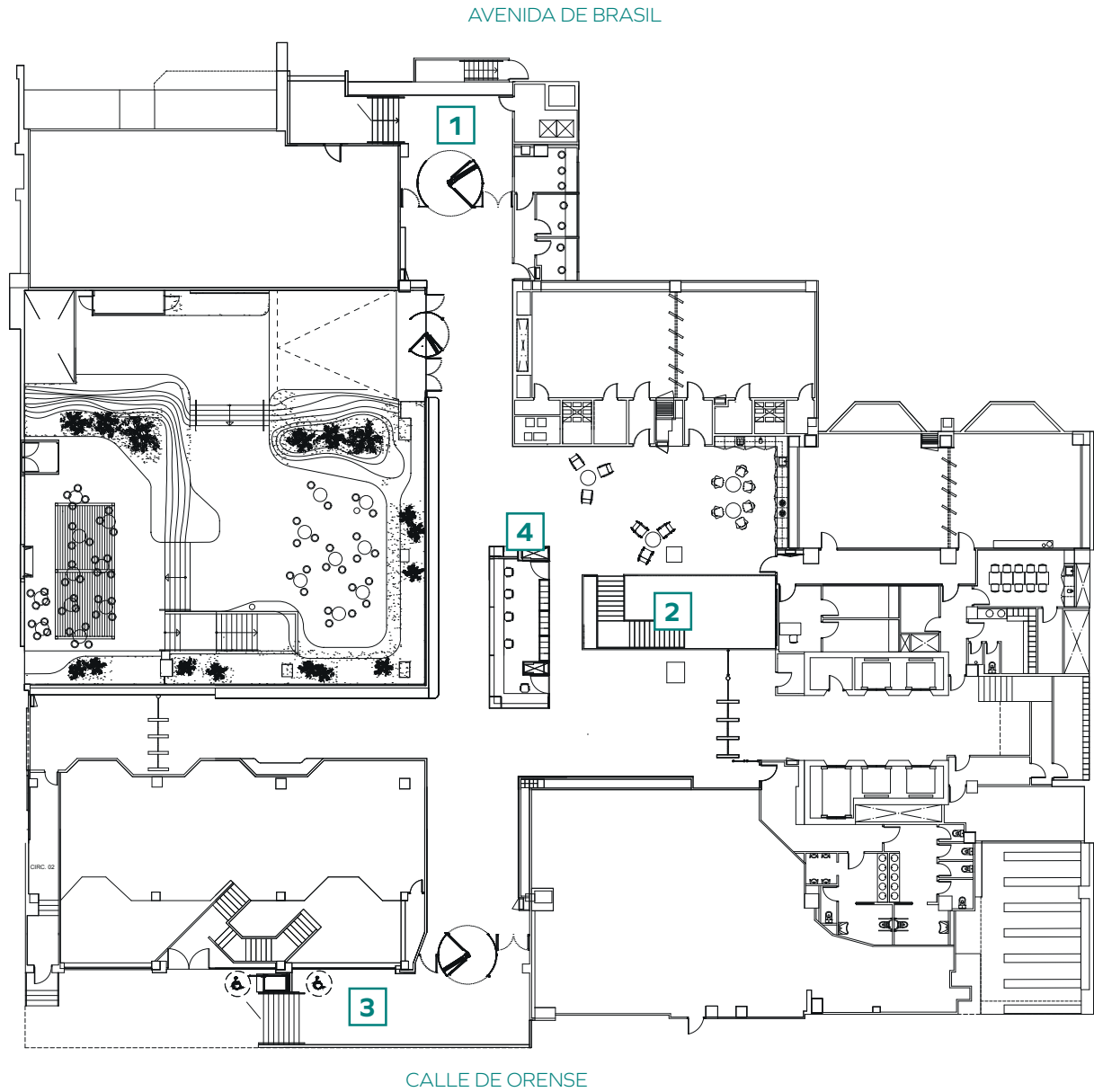


### FLOOR 0

- 1** Access loading and unloading Auditorium (there are access stairs).
- 2** Service lifts.
- 3** Loading and unloading.
- 4** Access Parking.



# 7. LOBBY AND ACCESS



## FLOOR E

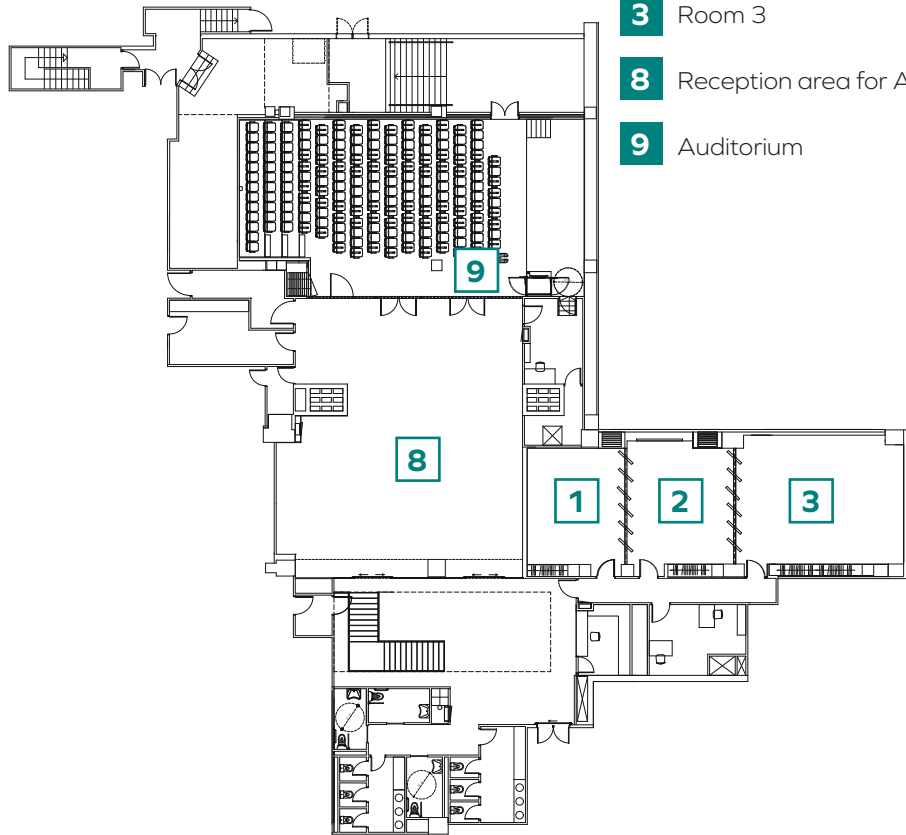
- 1 Acceso Av. de Brasil.
- 2 Access to Auditorium and Rooms 1+2+3.
- 3 Access Orense Street.
- 4 Reception.

# 8. GENERAL FLOOR PLAN MEETING PLACE

AVENIDA DE BRASIL

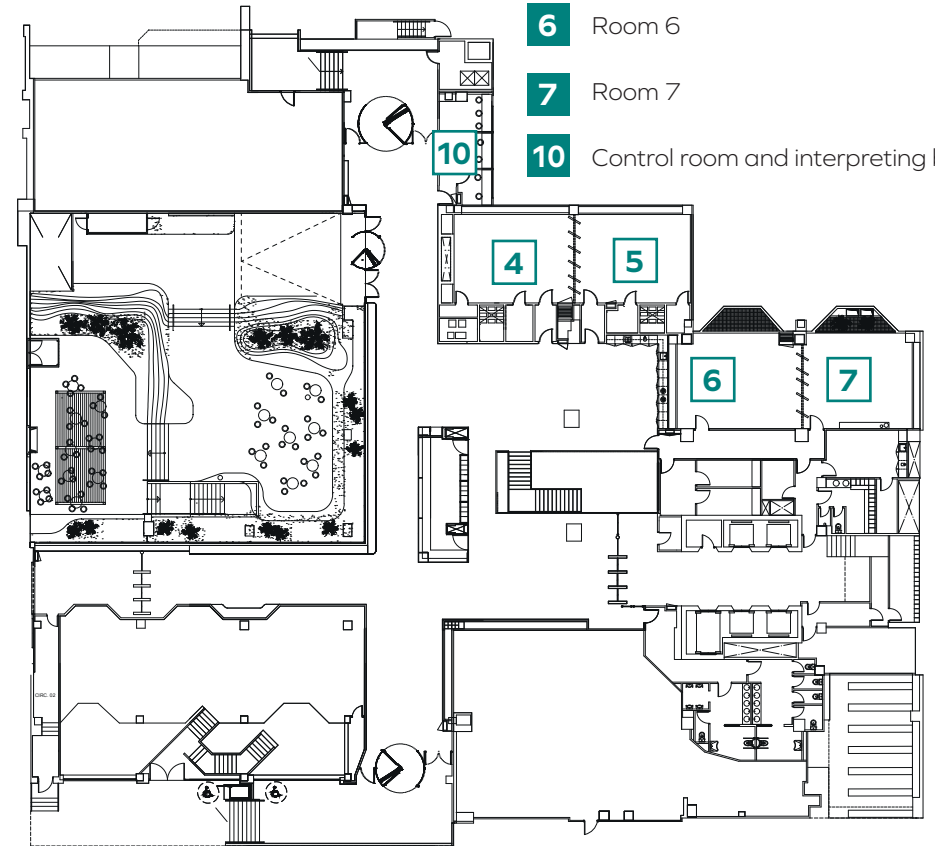
## FLOOR 0

- 1** Room 1
- 2** Room 2
- 3** Room 3
- 8** Reception area for Auditorium
- 9** Auditorium



## FLOOR E

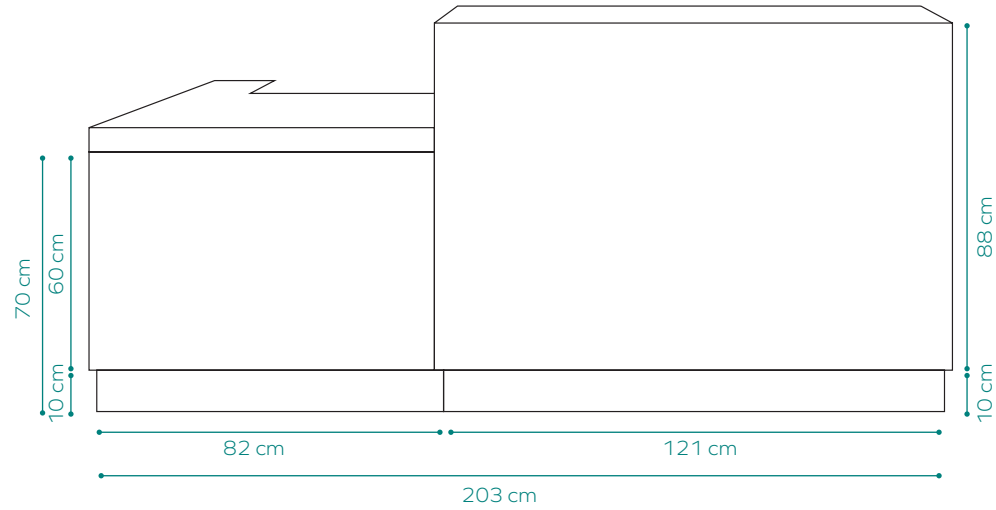
- 4** Room 4
- 5** Room 5
- 6** Room 6
- 7** Room 7
- 10** Control room and interpreting booths



CALLE DE ORENSE



## 8.1 CLOAKROOM (TABLE)

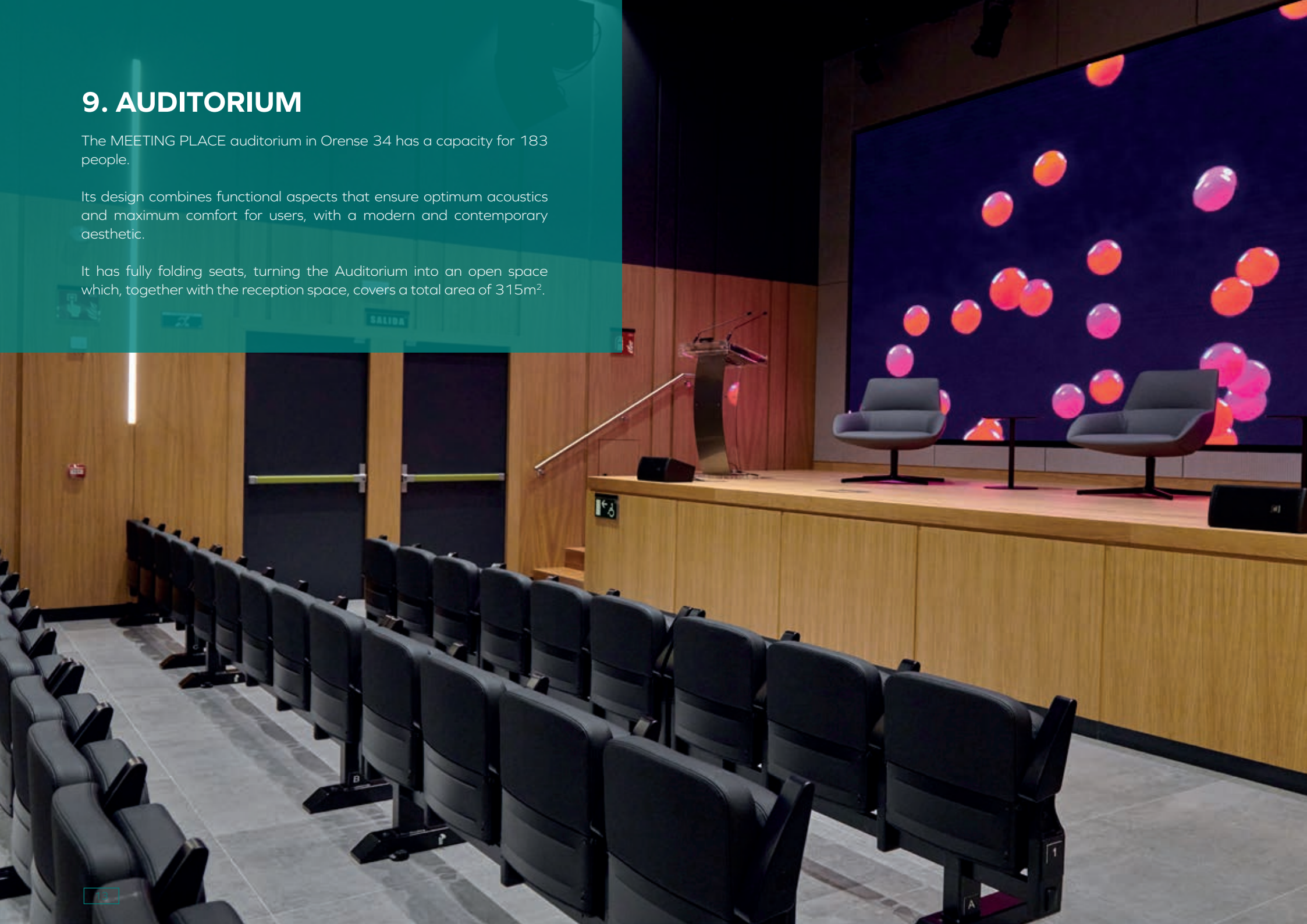


## 9. AUDITORIUM

The MEETING PLACE auditorium in Orense 34 has a capacity for 183 people.

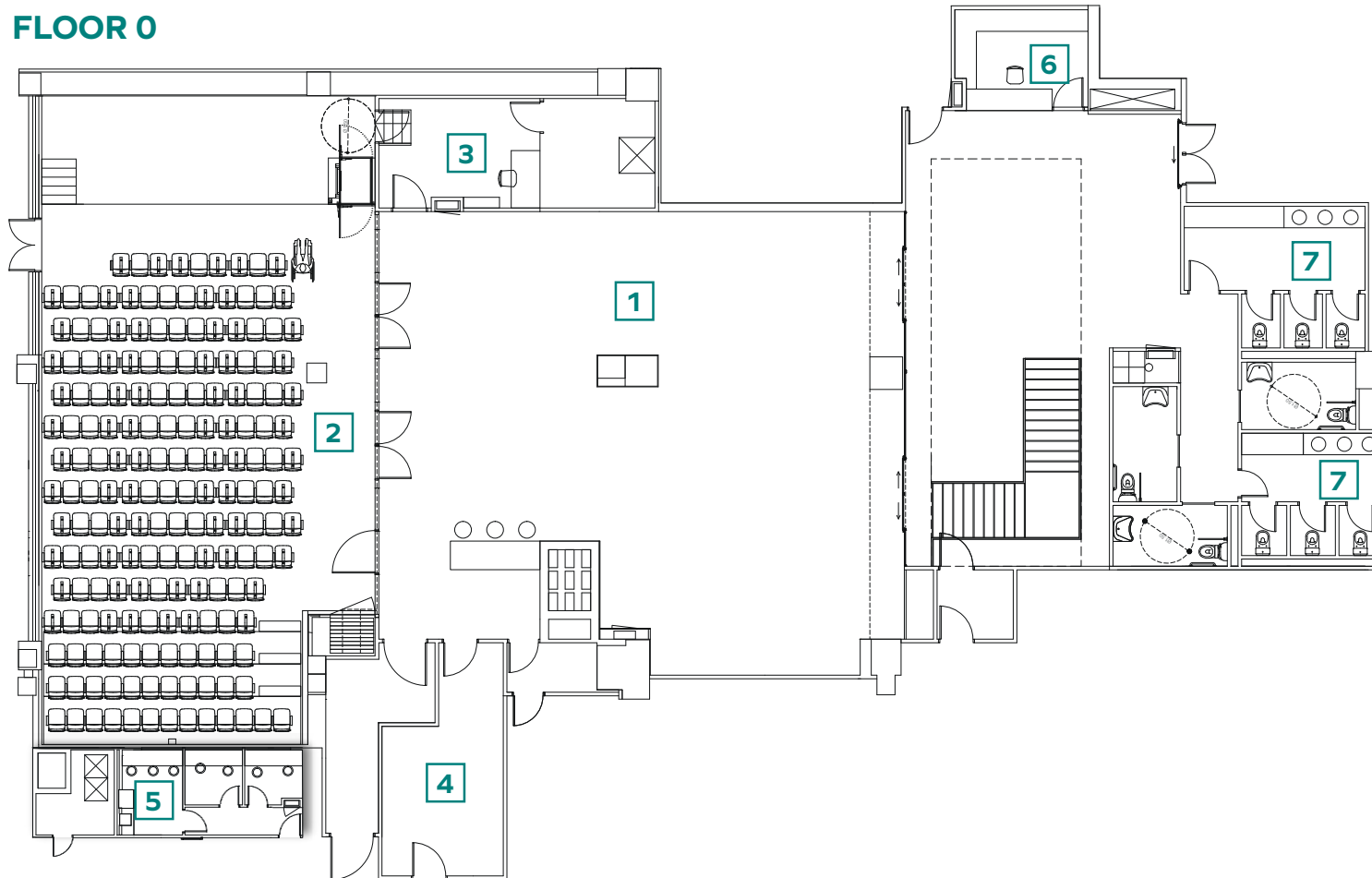
Its design combines functional aspects that ensure optimum acoustics and maximum comfort for users, with a modern and contemporary aesthetic.

It has fully folding seats, turning the Auditorium into an open space which, together with the reception space, covers a total area of 315m<sup>2</sup>.



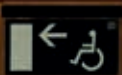
# 9. AUDITORIUM

## FLOOR 0

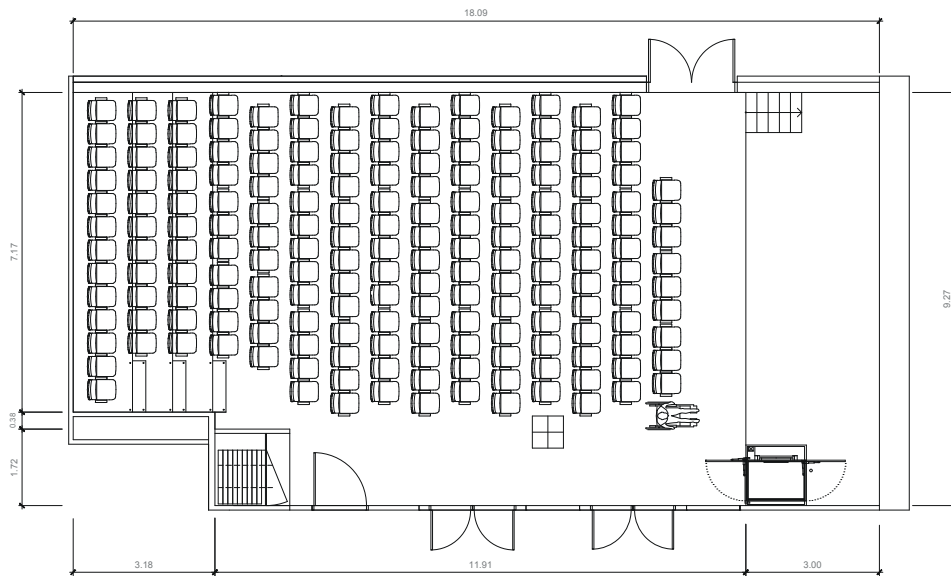
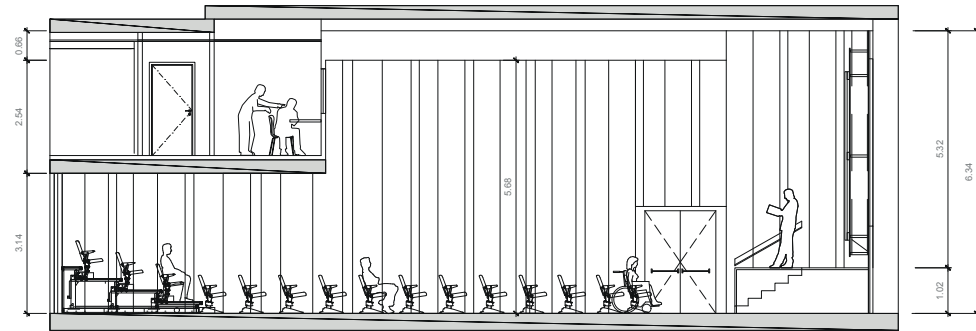


- 1** Auditorium reception area
- 2** Auditorium
- 3** Speakers' room
- 4** Kitchenette
- 5** Control rooms and interpreting booth\*
- 6** Cloakroom
- 7** Toilets

\*Floor E

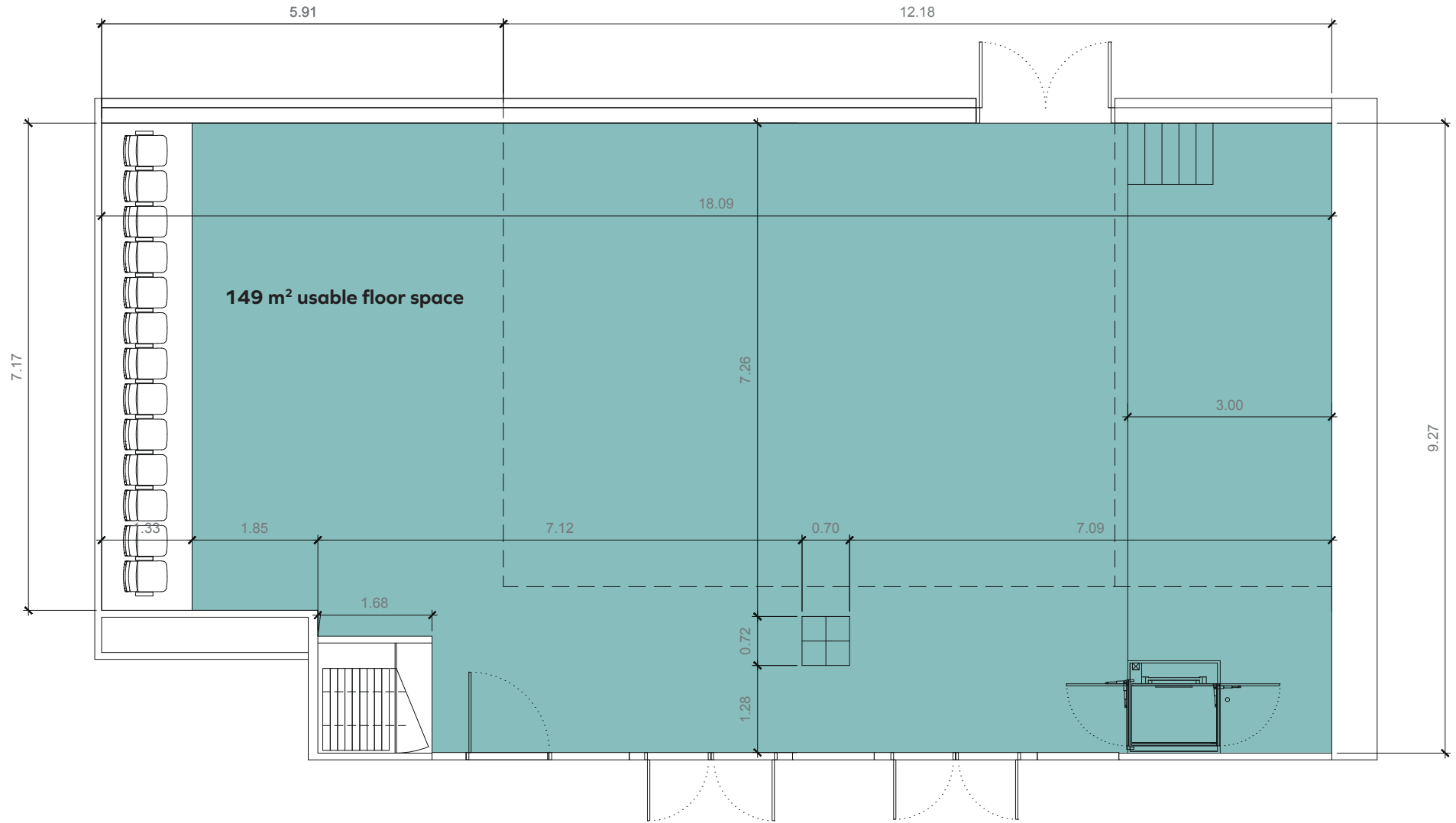


# 9. AUDITORIUM





# 9. AUDITORIUM



# 9.1. AUDITORIUM RECEPTION AREA

## Catering and Networking Area

The Auditorium has a magnificent 166m<sup>2</sup> reception area, which is an ideal space for networking and catering services.

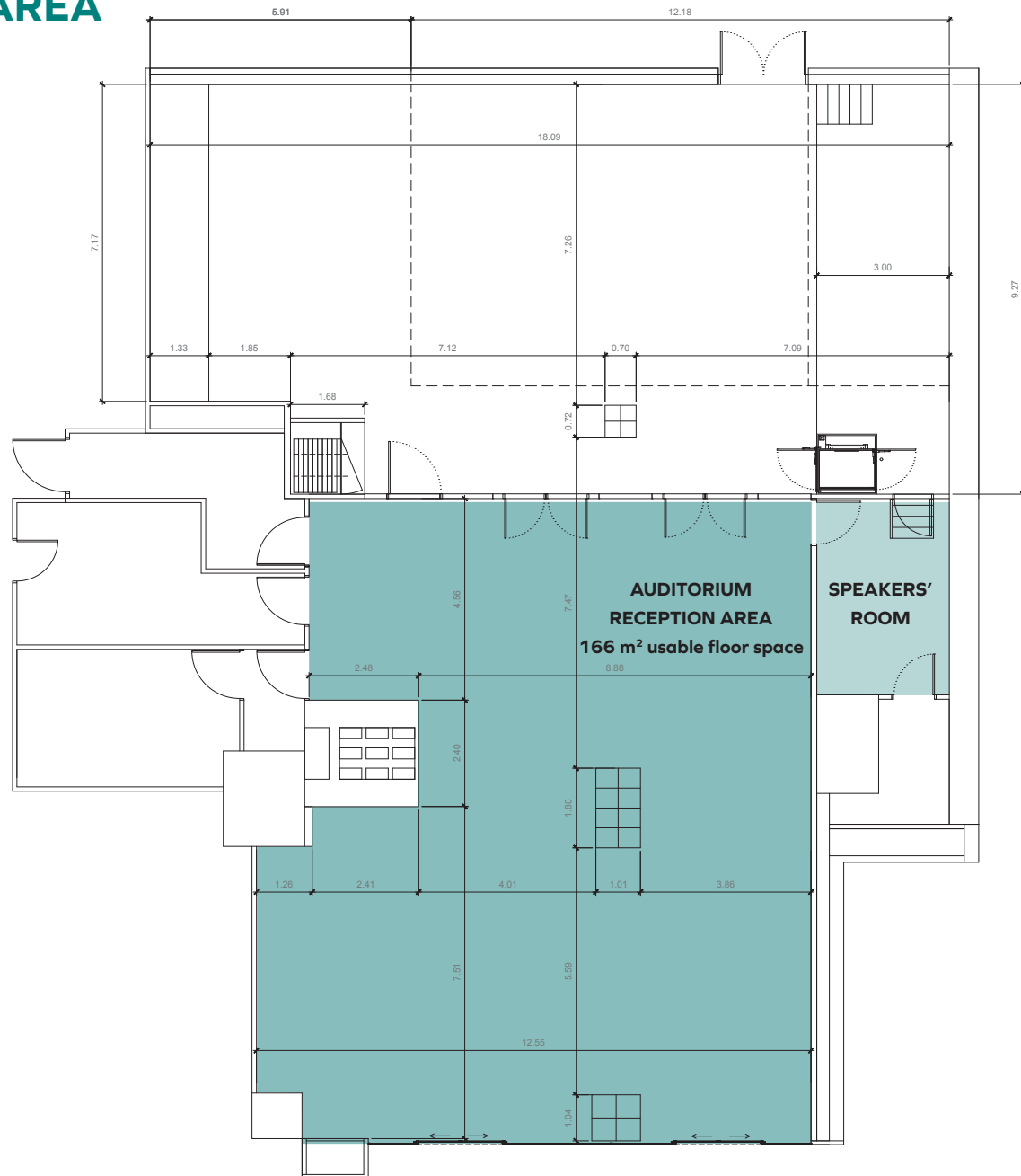
It has an integrated bar and an adjoining kitchenette with direct access.

The equipment is complemented by two SAMSUNG 98" displays with UHD 2160x3840 resolution customizable with corporate image, video, etc...

## Speakers' room

An ideal space for speakers to rest, prepare their presentations and make last-minute changes.

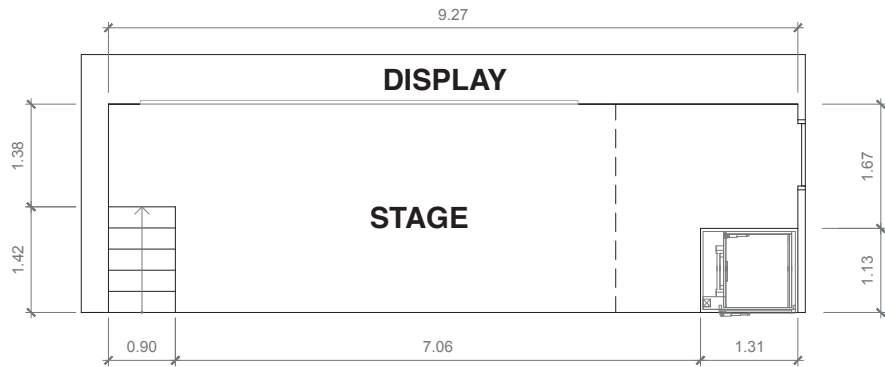
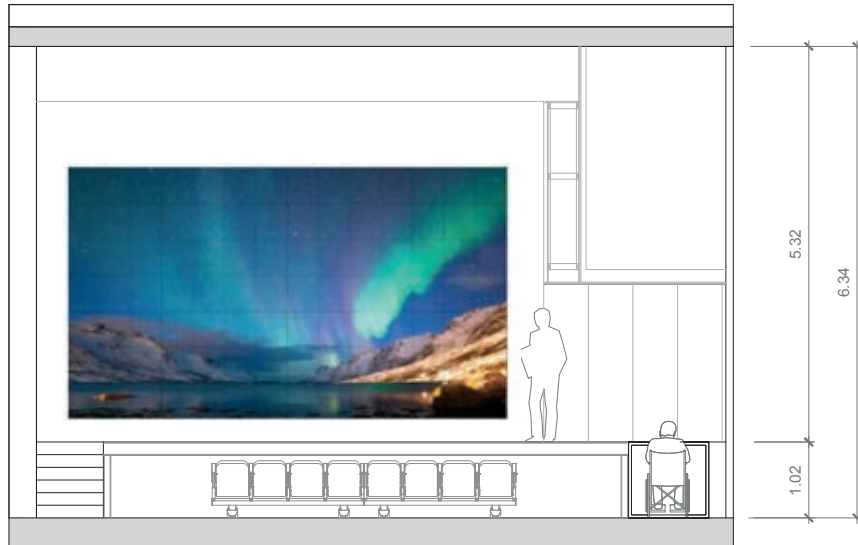
This room has a 55" monitor that allows you to follow the event in real time and has direct access to the stage.







## 9.2. STAGE



## 9.3. LED DISPLAY: SPECIFICATIONS FOR PRESENTATIONS

### Samsung IF025H-E LED

**Full dimensions of display:** Width 5.76m x Height 3.24 m

**Pixel Pitch Resolution:** 2.5mm

**Total resolution:** 2304 x 1296 pixels

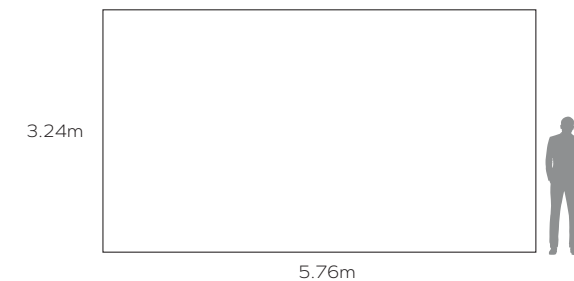
**Aspect ratio:** 16:9

The full display can be filled with various images or content from multiple formats, up to full resolution (Supports up to 4K).

It is possible to view multiple images, crop them, zoom in and out of any image, and window, perform mosaic function, freeze image, rotate image, add logos, etc.

### There are several configuration options:

- › A single input signal occupying the entire display (2304 pixels x 1296 pixels).
- › Display multiple simultaneous images - the unit has 12 split connector in 4 input groups (one input from each group can be displayed at a time).
- › Display up to 4 simultaneous images with the same resolution. (For example: 1 SDI camera and 3 sources coming from PCs) or up to 4 PCs (3 HDMI connectors and one with DVI connection) or 4 images with inputs (1 SDI and 3 with DVI input) or 4 images with inputs (1 SDI and 3 with HDMI, DP, DVI input), 4 image signals from DVI equipment, etc.
- › The equipment also allows you to split two groups of images from several inputs.
- › 2 HDMI/DP images can be expanded and blended at the same time on the full display.

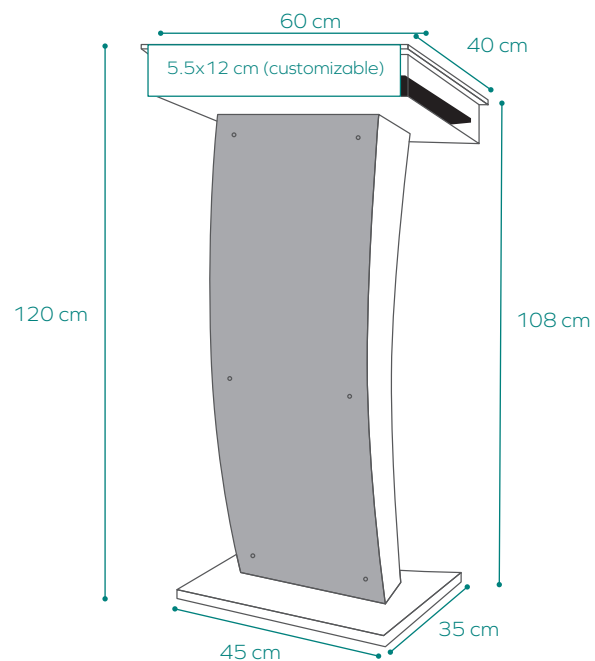


## 9.4. LECTERN

1 lectern with built-in 22" monitor and two SHURE SH MX418/C 40 cm flexible microphones.

**Material:** Methacrylate

	Dimensions	Methacrylate thickness
Table	60x40 cm	10 mm
Base	35x45 cm	25 mm
Vertical parts		20 mm
Front	115x33 cm	3 mm metallic grey with false bottom to hide the cables.
Total height	120 cm	



## 9.5. AUDIO

- › Main audio located on both sides of the stage consisting of 2 SHURE JBL VRX928LA 3-element curvature columns. This enclosure consists of an 8" woofer and two compression drivers.
- › It incorporates a system of subwoofers composed of 2 acoustic enclosures with 15" component from the series VRX by JBL, model VRX915S.
- › The Frontfill system permits good speech intelligibility in the first rows of the stalls and better spatial referencing of the sound, composed of 2 enclosures acoustic JBL Model AC16.
- › BSS Soundweb London system, consisting of a programmable digital audio processor with 12 inputs and 8 line outputs.
- › SOUNDCRAFT SC IMPACT 24 Mic/Line XLR and 8 Mic/ Line XR including a DANTE module (8x8).
- › Reception area sound system: 4 JBL Control 29 AV WH-1 loudspeakers and power amplifier CROWN Xli 1500..

## 9.6. SOUND

- › 4 headworn or lapel microphones and SHURE SH MXW1/O bodypack transmitter.
- › 2 SHURE SH MXW2/SM58 Z11 Wireless Handheld Microphones.
- › 2 microphone stands.
- › 4 SHURE wireless table microphones consisting of SHURE conference unit SH MXCW640 with LCD touchscreen, built-in speaker and dual gooseneck flexible mics SHURE SH MXC416DF/C DUAL FLEX 40cms. It offers complete control over sound, agenda, voting, supporting documents, graphic presentation and interpretation.



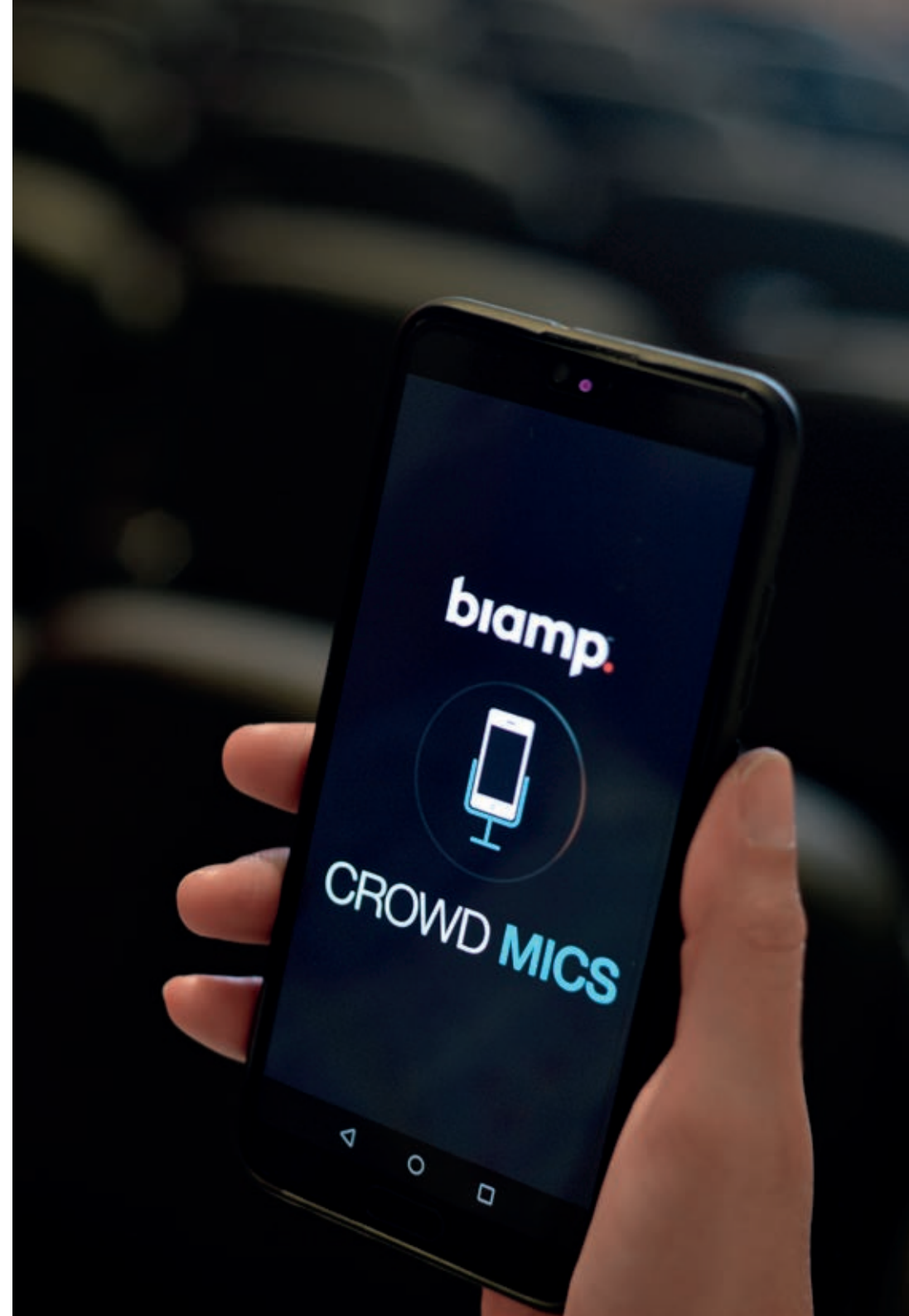


## 9.7. INTERACTION: CROWD MICS SYSTEM

Collaborative system based on APP Crown model BIAMP Crowd Mics. Empower the audience to take part in the event, speak, text and vote directly from their Smartphones.

## 9.8. LIGHTING

- > Strand Lighting 200+ control desk.
- > 4 Beam moving heads in LED technology with 7 x 40W RGBW emitting chips.
- > 8 spotlights Par System ROBE Perfect 150 RGBA FW, ACL style beam, with zoom control and a CRI in LED format.
- > 8 wireless spotlights ASTERA AX5 TriplePar.



## 9.9. VIDEO / VIDEOCONFERENCE

### AV MANAGEMENT AND CONTROL SYSTEM

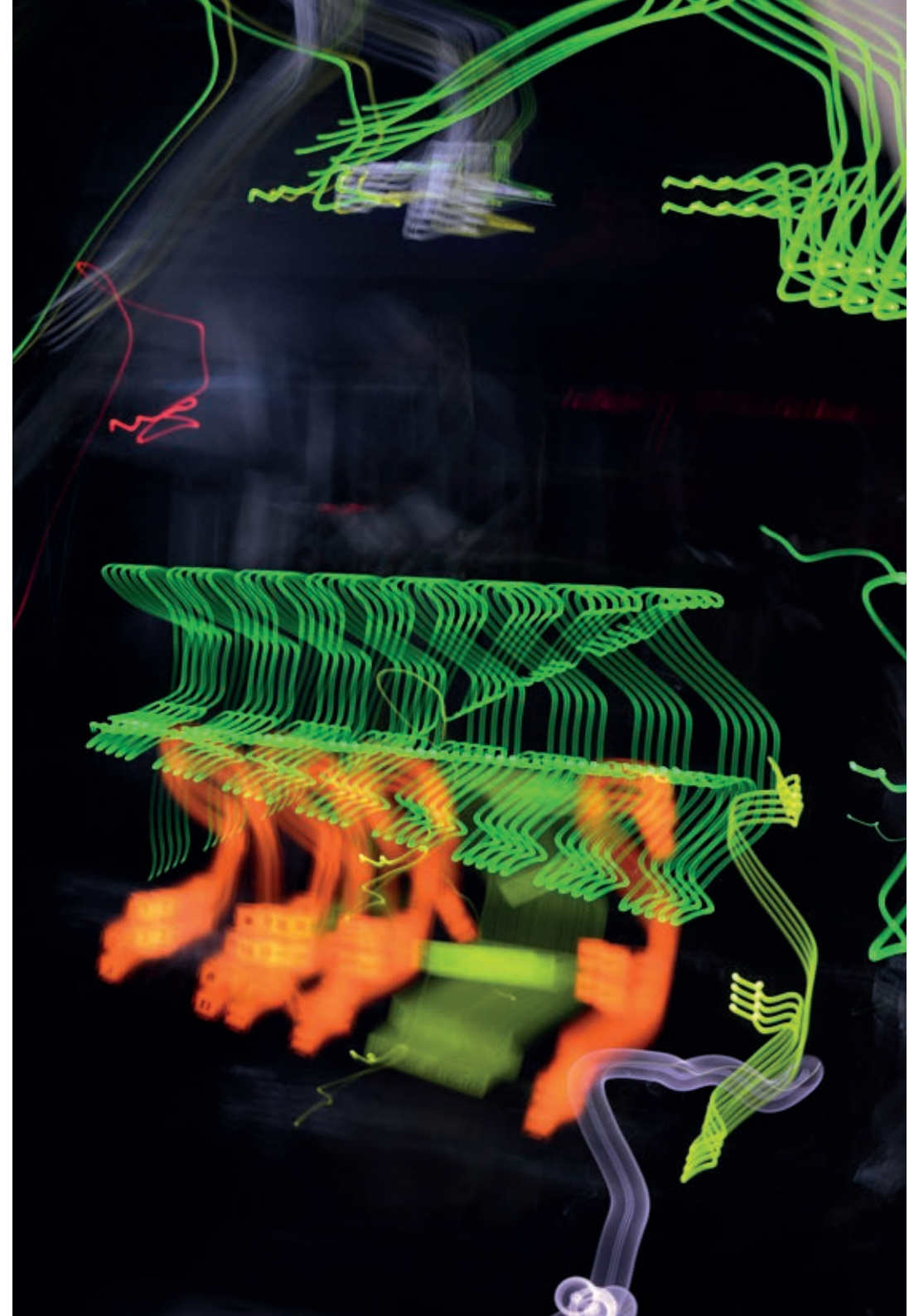
- › CRESTRON NVX AV Signal Switching System that allows routing audio and video signals on all displays, control connectivity and USB.
- › System management by CRESTRON control processor, touch panel Apple iPad.
- › MAGNIMAGE W4000 Video Processor: Mosaic and Visualization Functions multiple images on the display. 4K selector. Supports resolutions up to 8kx2K.

### VIDEO CONFERENCING SYSTEM

Integrated Videoconferencing System MEDIA PORT MP200 EXTRON USB - HDMI which allows you to connect the auditorium (cameras, processors, microphones) to video conferencing applications such as Cisco Webex, Zoom, BlueJeans, Teams, Skype for Business...

### RECORDING AND STREAMING SYSTEM

- › Extron SMP 351 Recording and Streaming System.
- › Two Panasonic PTZ cameras, model AW-HE40HS, with 30° optical zoom increases.
- › DATAVIDEO SE-1200MU multi-format video mixing system.



## 9.10. OTHER AUDIOVISUAL MEDI

The Auditorium has two booths for simultaneous translation, with audio sockets and data. In addition, the cabins are equipped with a viewing monitor for the interpreters (one in each booth).

### HEARING LOOP

Hearing induction loop system that covers the entire seating area and stage.

### PRESS RACK

PINANSON case with 2 boxes for press audio distribution (12/16).

### REFERENCE DISPLAY STAGE

43" UHD 4k Samsung QM43R display. Includes floor stand with wheels.

### COLLABORATION SYSTEM BOAT MODEL CSE 200

Wireless Presentation System: Includes CLICKSHARE CSE200 System more two USB buttons for connection to any PC.

### TIMER COUNTDOWN

Timer system for the control of presentations located in the front area of the stage (under the control panel) and on the lectern.

## 9.11. WIFI / NETWORK CONNECTION

600 dedicated symmetric connection.



## 10. GENERAL CONDITIONS

### Please take note of the following points during the organisation and running of the event:

- › Spaces in which material such as flight cases or other audio-visual elements are stored must be protected with carpeting or material that prevents damage to the floors/walls.
- › The extra equipment, decoration and other elements of the assembly, must be removed once the event is over, unless expressly authorized by the event coordinator.
- › Any leftover material, such as roll ups, merchandising posters, etc. will be recycled. The delivery of material for events that must arrive in advance to the MEETING PLACE (brochures, merchandising, decorative elements, etc.) must be identified with the word MEETING PLACE, the name of the event and the date the event is hosted, it cannot be delivered before 3 working days prior to the event, the delivery schedule from 08.00 to 14.00.
- › The use of candles or elements that produce any kind of flame or steam is not allowed. The use of electronic cigarettes is not permitted.
- › Drilling, nailing or placing any element anchored or attached by any means to the walls, ceilings or floors is prohibited.
- › Using double-sided tape to place elements on objects, furniture or any type of surface of the MEETING PLACE is prohibited. Masking tape or electrostatic elements must be used in all instances.
- › The location of elements such as posters, roll-ups or any other visual identity element must be agreed with the Events Department.
- › It is not permitted to cover emergency signs or MEETING PLACES's own signs, if the latter are hidden due to the design of the event, additional signage must be placed in a visible manner.
- › No food/drink is allowed in the auditorium.
- › In the meeting rooms it is not permitted to hang or stick any elements on the paper walls, only masking tape or Post-it notes may be used on the wooden walls.



# 11. ROOMS

	Area m <sup>2</sup>	Height	TOTAL CAPACITY					Cocktail	Banquet
			Theatre	School	Theatre U	Shape Imperial			
<b>ROOM 1</b>	30	2.7	20	12	10	9	20		
<b>ROOM 2</b>	34	2.7	20	12	12	11	20		
<b>ROOMS 1+2</b>	64	2.7	40	18	26	25	40		
<b>ROOM 3</b>	48	2.7	20	20	18	17	20		
<b>ROOMS 2+3</b>	82	2.7	40	40	34	33	40		
<b>ROOMS 1+2+3</b>	112	2.7	60	60	50	49	60		
<b>ROOM 4</b>	52	2.5	20	20	20	17	20		
<b>ROOM 5</b>	48	2.5	20	20	14	9	20		
<b>ROOMS 4+5</b>	100	2.5	40	40	40	37	40		
<b>ROOM 6</b>	56	2.53	20	30	22	21	20		
<b>ROOM 7</b>	47	2.53	20	20	18	17	20		
<b>ROOMS 6+7</b>	103	2,53	40	40	42	41	40		
<b>Auditorium Reception Area</b>	166						183	48	
<b>Auditorium</b>	149	5.32	183					40	
<b>Auditorium + Reception Area</b>	315						230	88	

# ROOM 1

 Wi-Fi Internet connection.

 Complimentary mineral water, paper and pen available for participants.

## Equipment:

11 Samsung 4K 85" QM85N monitor.



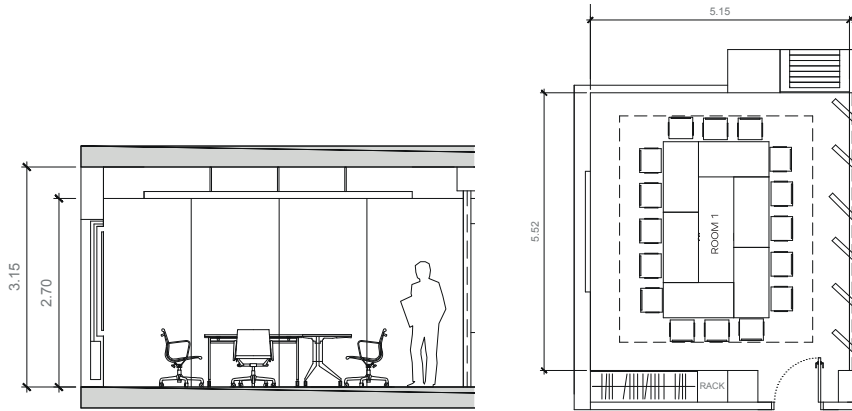
CRESTRON UC-SB1-CAM videoconferencing systems. compatible with Skype™, Skype for Business, V-CUBE, Google Hangouts™, FaceTime®, Cisco Webex®, GoToMeeting®, Adobe® Connect™, BlueJeans, Zoom, Vidyo®, Fuze, WebRTC.

Connectivity through the BARCO CX-30 wireless system.

CLEAR ONE BEAMFORMING BMA 360 ceiling microphone system.

4 FreeSpace 3 Speakers - BOSE.

CRESTRON touch home automation control panel for multimedia equipment, lighting and climate control.




## ROOM 2

 Wi-Fi Internet connection..

 Complimentary mineral water, paper and pen available for participants.

### Equipment:

1 Samsung 4K 85" QM85N monitor.

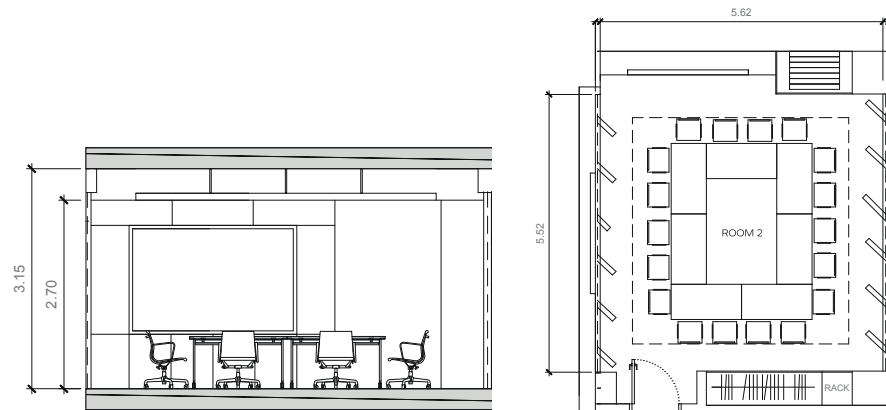
 CRESTRON UC-SB1-CAM video conferencing systems. compatible with Skype™, Skype for Business, V-CUBE, Google Hangouts™, FaceTime®, Cisco Webex®, GoToMeeting®, Adobe® Connect™, BlueJeans, Zoom, Vido® , Fuze, WebRTC.

Connectivity via the BARCO CX-30 wireless system.

CLEAR ONE BEAMFORMING BMA 360 ceiling microphone system.

4 FreeSpace 3 Speakers - BOSE.

CRESTRON touch home automation control panel for multimedia equipment, lighting and air conditioning control.



# ROOM 3


 Wi-Fi Internet connection.

 Complimentary mineral water, paper and pen available for participants.

## Equipment:

1 Samsung 4K 85" QM85N monitor.

1 Samsung Flip2 65" interactive device.

 USB video conferencing system consisting of Aver VC520 Pro PTZ camera with 12x optical zoom, compatible with Skype™, Skype for Business, V-CUBE, Google Hangouts™, FaceTime®, Cisco Webex®, GoToMeeting®, Adobe® Connect™, BlueJeans, Zoom, Vidy®, Fuze, WebRTC.

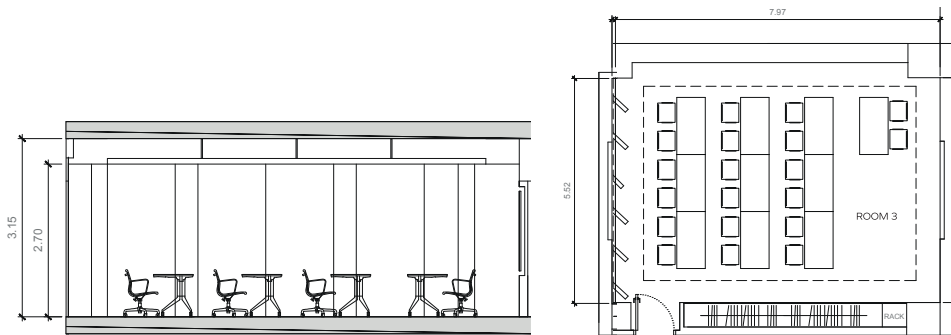
Docking USB HDMI/DVI/VGA KENSINGTON DS3600.

CLEAR ONE BEAMFORMING BMA 360 ceiling microphone system.

4 FreeSpace 3 Speakers - BOSE.

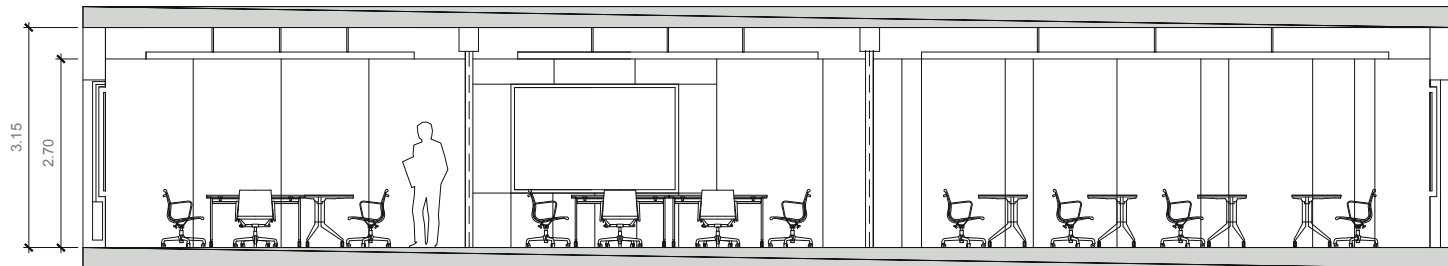
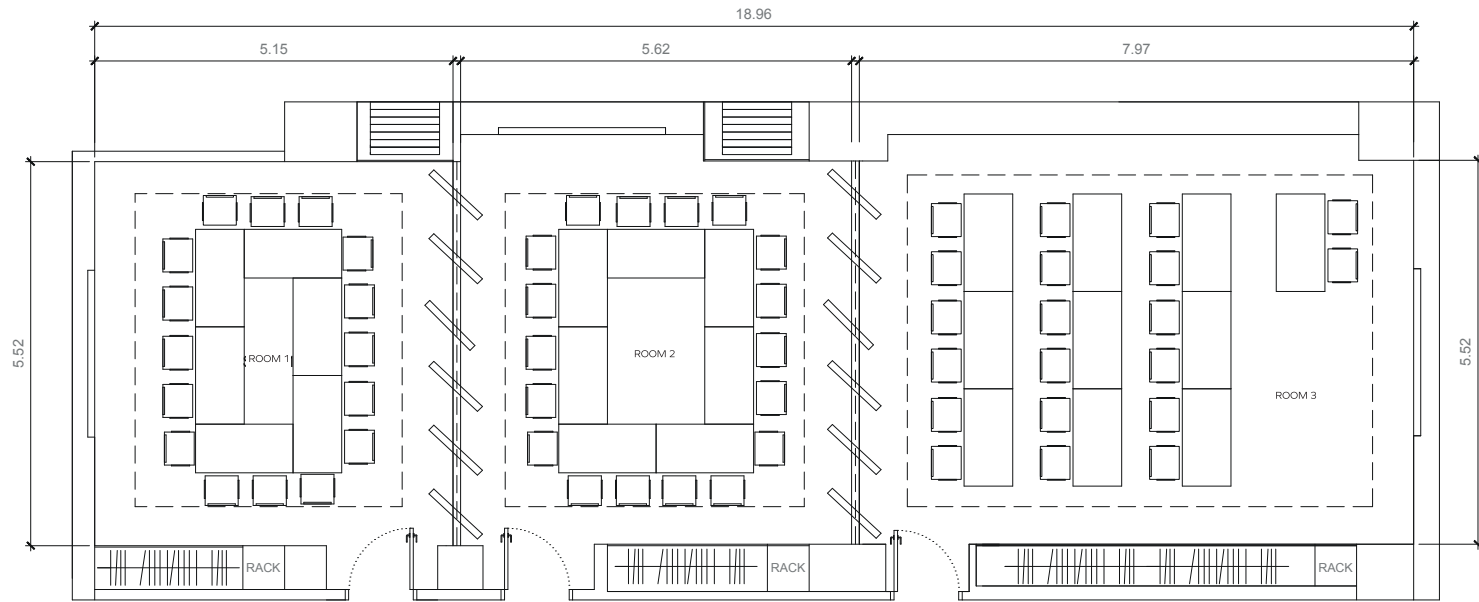
CRESTRON touch home automation control panel for multimedia equipment, lighting and climate control.

1 SHURE SH QLXD24E/SM58 H51 SH Wireless Microphone.





# COMBINATION OF ROOMS 1 + 2 + 3



ROOMS 1+2

ROOMS 2+3

ROOMS 1+2+3

## COMBINATION OF ROOMS 1 + 2



## COMBINATION OF ROOMS 2 + 3



## COMBINATION OF ROOMS 1 + 2 + 3



# ROOM 4

 Wi-Fi Internet connection.

 Complimentary mineral water, paper and pen available for participants.

## Equipment:

1 Samsung 4K 85" QM85N monitor.

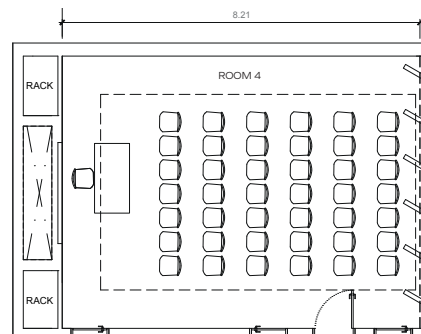
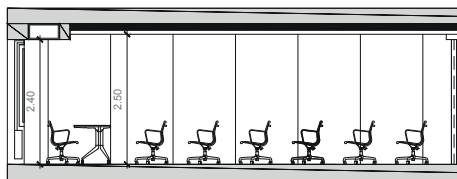
1 Samsung Flip2 65" interactive device.



CRESTRON UC-SB1-CAM integrated video conferencing system with camera and speakers. compatible with Skype™, Skype for Business, V-CUBE, Google Hangouts™, FaceTime®, Cisco Webex®, GoToMeeting®, Adobe® Connect™, BlueJeans, Zoom, Vidyo®, Fuze, WebRTC.

Connectivity via BARCO CX-30 wireless system.

CRESTRON touch home automation control panel for multimedia equipment, lighting and air conditioning control - Independent room control.



# ROOM 5

 Wi-Fi Internet connection.

 Complimentary mineral water, paper and pen available for participants.

## Equipment:

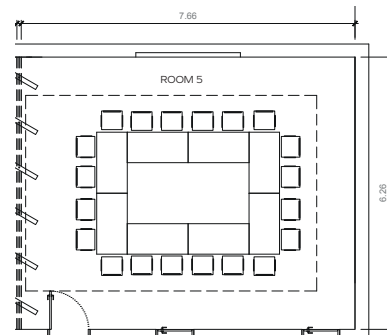
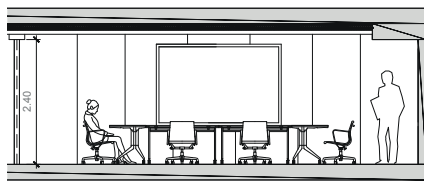
1 Samsung 4K 85" QM85N monitor.



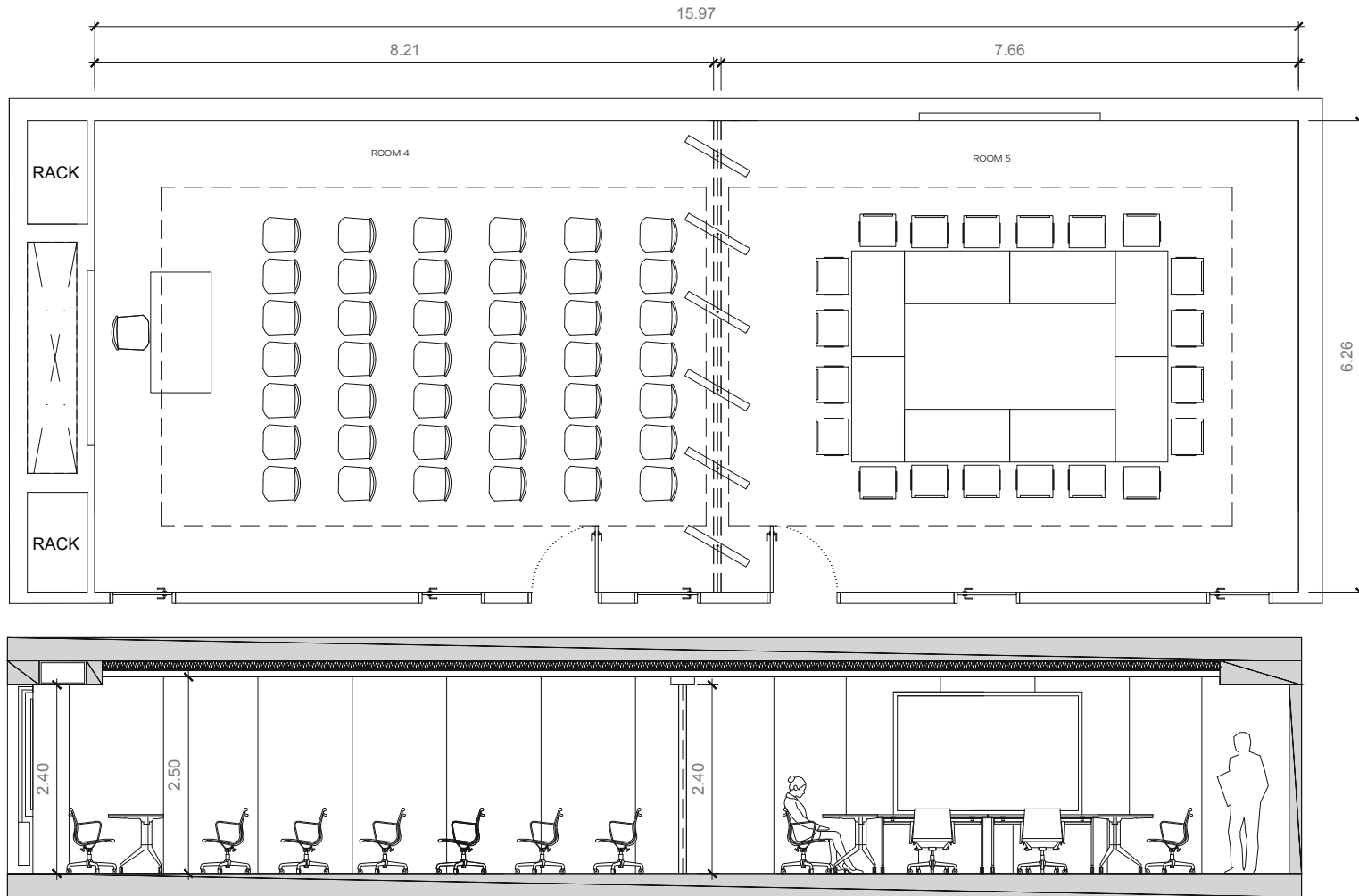
CRESTRON UC-SB1-CAM integrated video conferencing system with camera and speakers. compatible with Skype™, Skype for Business, V-CUBE, Google Hangouts™, FaceTime®, Cisco Webex®, GoToMeeting®, Adobe® Connect™, BlueJeans, Zoom, Vidyo®, Fuze, WebRTC.

Connectivity via BARCO CX-30 wireless system.

CRESTRON touch home automation control panel for multimedia equipment, lighting and air conditioning control. Independent room control.



# COMBINATION OF ROOMS 4 + 5



## ROOMS 4+5

## COMBINATION OF ROOMS 4 + 5






# ROOM 6

 Wi-Fi Internet connection.

 Complimentary mineral water, paper and pen available for participants.

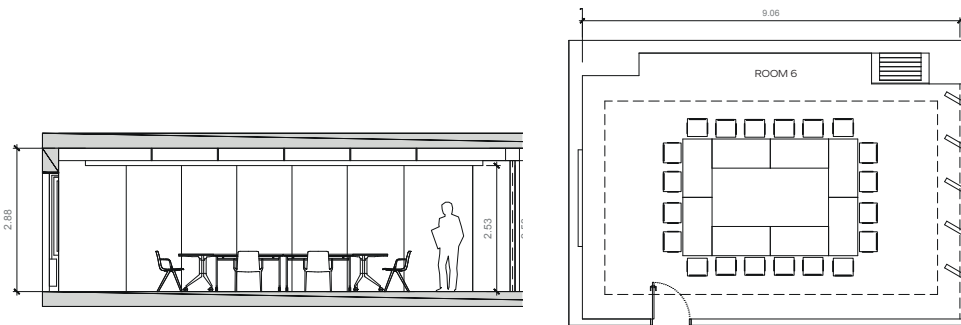
### Equipment:

1 Samsung 4K 85" QM85N monitor.

 CRESTRON UC-SB1-CAM integrated video conferencing system with camera and speakers. compatible with Skype™, Skype for Business, V-CUBE, Google Hangouts™, FaceTime®, Cisco Webex®, GoToMeeting®, Adobe® Connect™, BlueJeans, Zoom, Vidyo®, Fuze, WebRTC.

Connectivity via BARCO CX-30 wireless system.

CRESTRON touch home automation control panel for multimedia equipment, lighting and air conditioning control. Independent room control.




# ROOM 7

 Wi-Fi Internet connection.

 Complimentary mineral water, paper and pen available for participants.

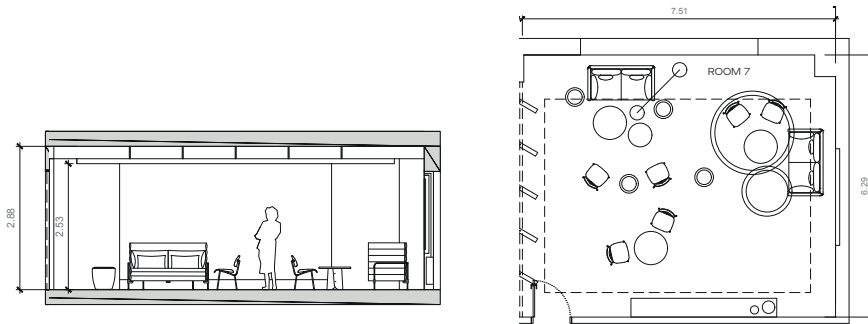
## Equipment:

1 Samsung 4K 85" QM85N monitor.

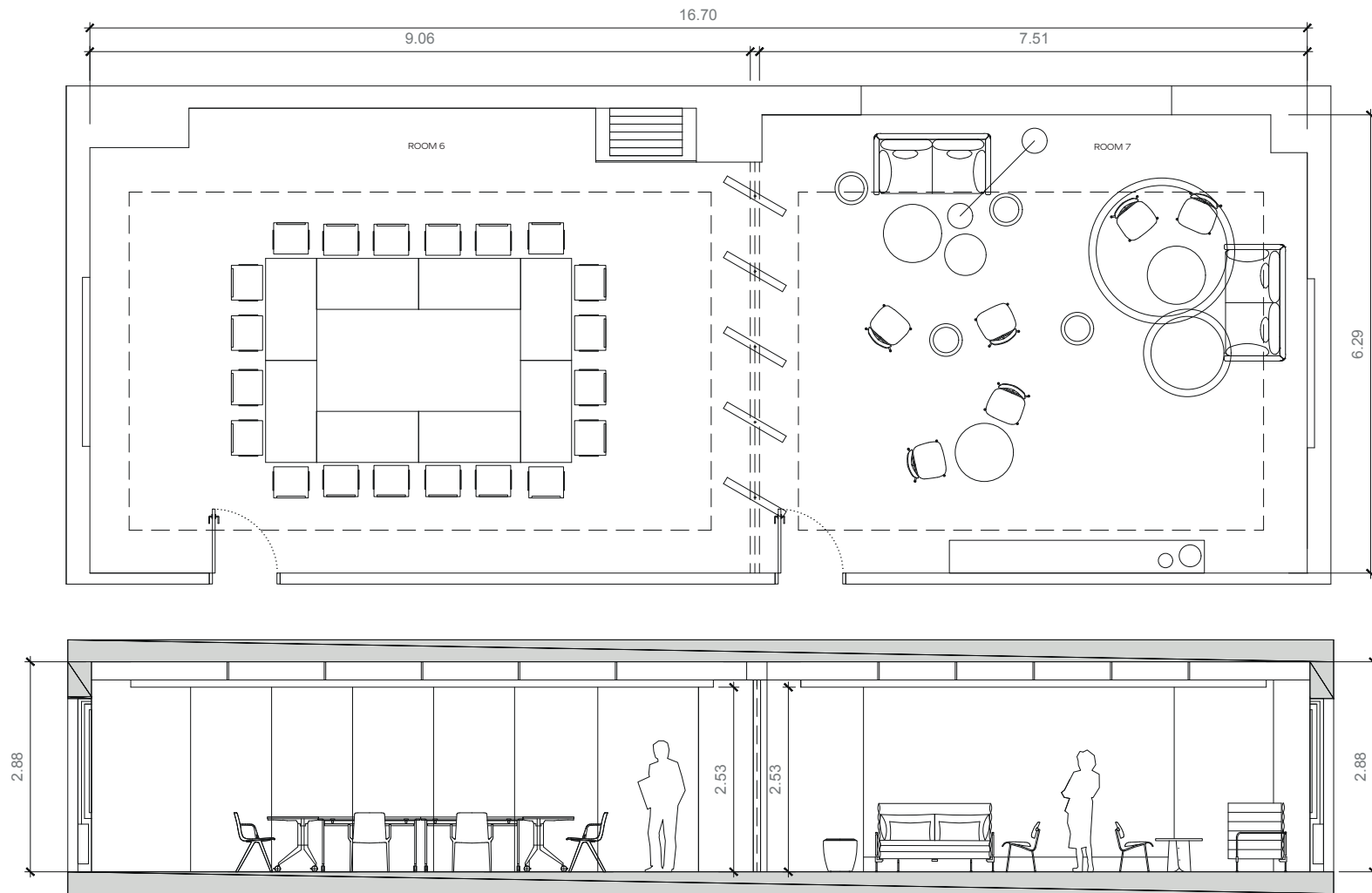
 CRESTRON UC-SB1-CAM integrated video conferencing system with camera and speakers. compatible with Skype™, Skype for Business, V-CUBE, Google Hangouts™, FaceTime®, Cisco Webex®, GoToMeeting®, Adobe® Connect™, BlueJeans, Zoom, Vidyo®, Fuze, WebRTC.

Connectivity via BARCO CX-30 wireless system.

CRESTRON touch home automation control panel for multimedia equipment, lighting and air conditioning control. Independent room control.



# COMBINATION OF ROOMS 6 + 7



## ROOMS 6+7

# COMBINATION OF ROOMS 6 + 7



# 12. FURNITURE

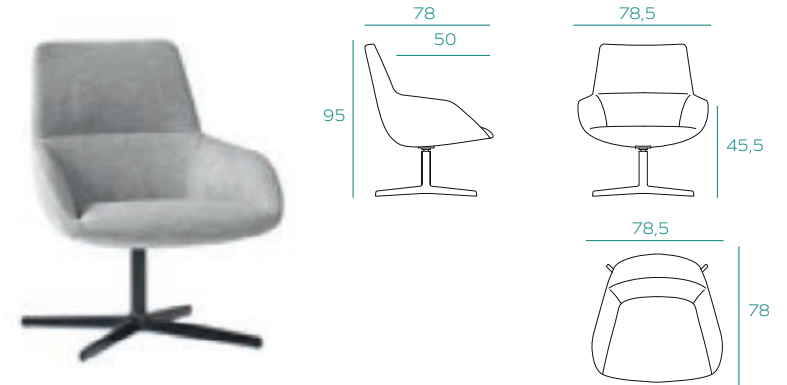
## KABI CHAIR



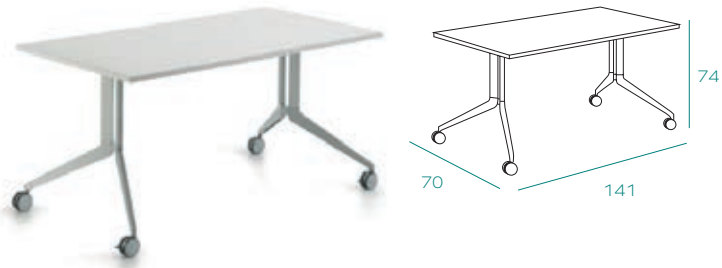
## A-CHAIR



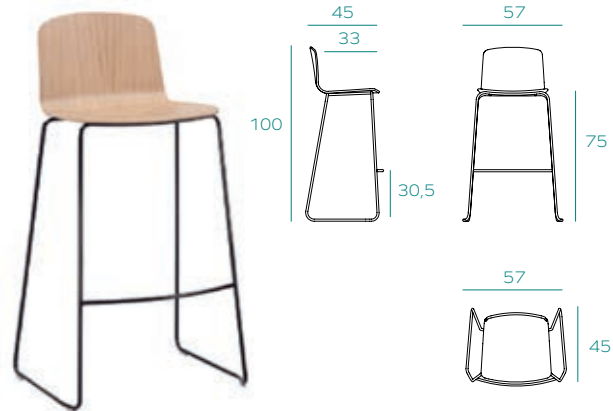
## XL DUNAS LOUNGE CHAIR



## HAWORTH TABLE



## ANN STOOL



## NUME SIDE TABLE





MEETING PLACE

ORENSE 34



T +34 917 940 373  
[orense34@meetingplace.es](mailto:orense34@meetingplace.es)